



# ARCHITECTURAL PORTFOLIO

## **HOUSES**





# OUR STORY

Somos una empresa salvadoreña fundada en 2016 dedicada a la consultoría, Arquitectura y Construcción, especializada en proyectos y desarrollos inmobiliarios de playa.

Hemos diseñado aproximadamente 300 proyectos en la zona costera y construido más de 150 proyectos, entre hoteles boutiques, casas de playa, villas, entre otros, que representan aproximadamente más de 85,000 m<sup>2</sup> de construcción.

Más allá de ser una empresa creativa y constructora, nuestra filosofía es que juntos construimos sueños bajo la EXPERIENCIA DOMA que se enfoca en el servicio total.





# NUESTROS **SERVICIOS**



Prefeasibility  
Studies



Architectural  
Design



Interior Design



Permits and  
Procedures



Project  
Formulation



Construction and  
supervision



Post-sale follow-  
up





We are *leaders* in real estate  
development in **the coastal area.**





# EXPE RIEN CES

01



HOUSES

02



DEVELOPMENT  
REAL ESTATE

03



CORPORATIVE

04



HOTELS





# CASAS





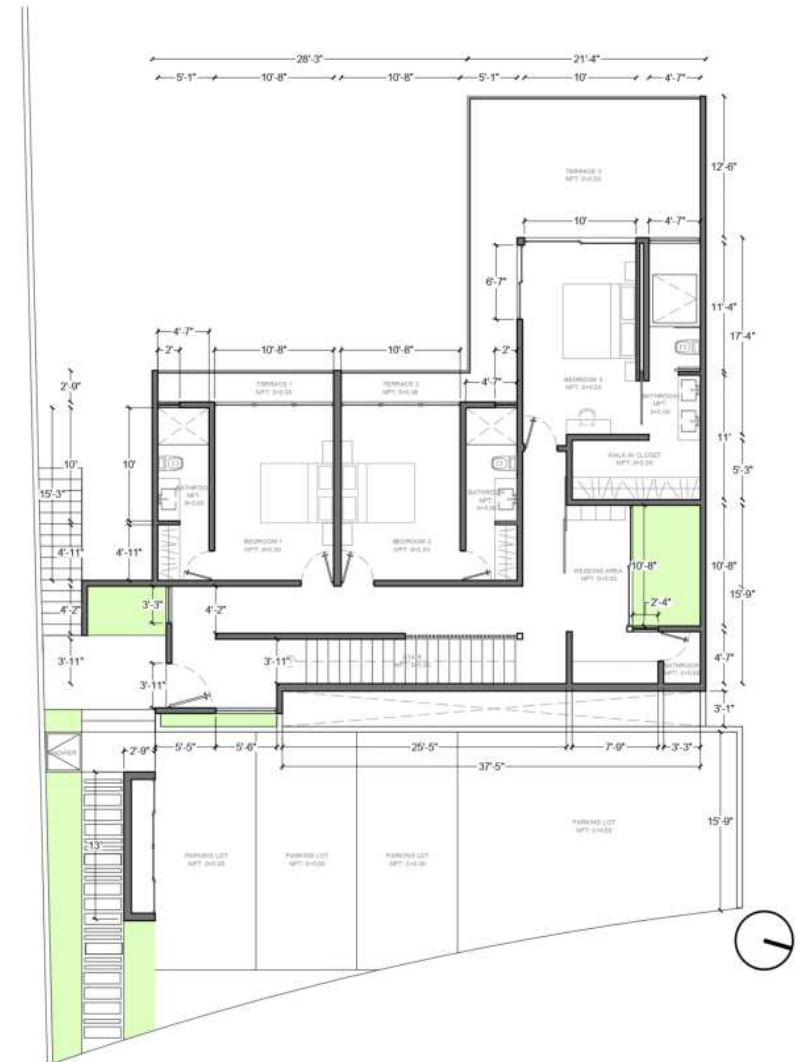
# SUNSET HOUSE

Cerromar





A luxury retreat that combines the serenity of beach life with the majesty of mountain life, framed by contemporary architecture and elegant finishes that blend seamlessly into its natural surroundings.

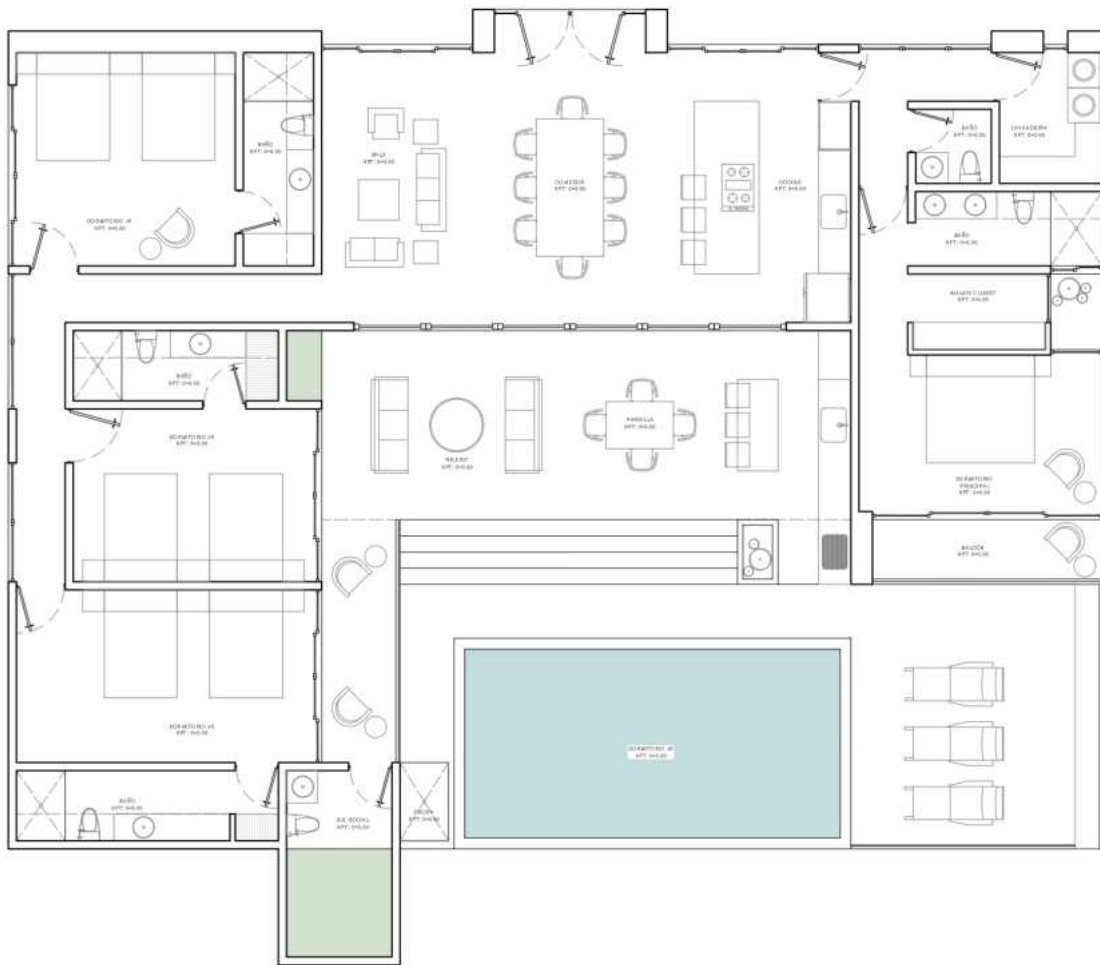


# TROPICAL HOUSE

Bahía Dorada

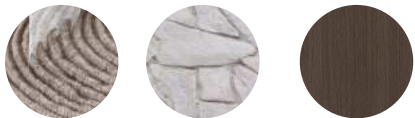






A home designed to provide a luxurious and comfortable experience. The residence is distinguished by its modern and elegant architecture.

Large windows let in natural light and offer panoramic views of the garden and pool.



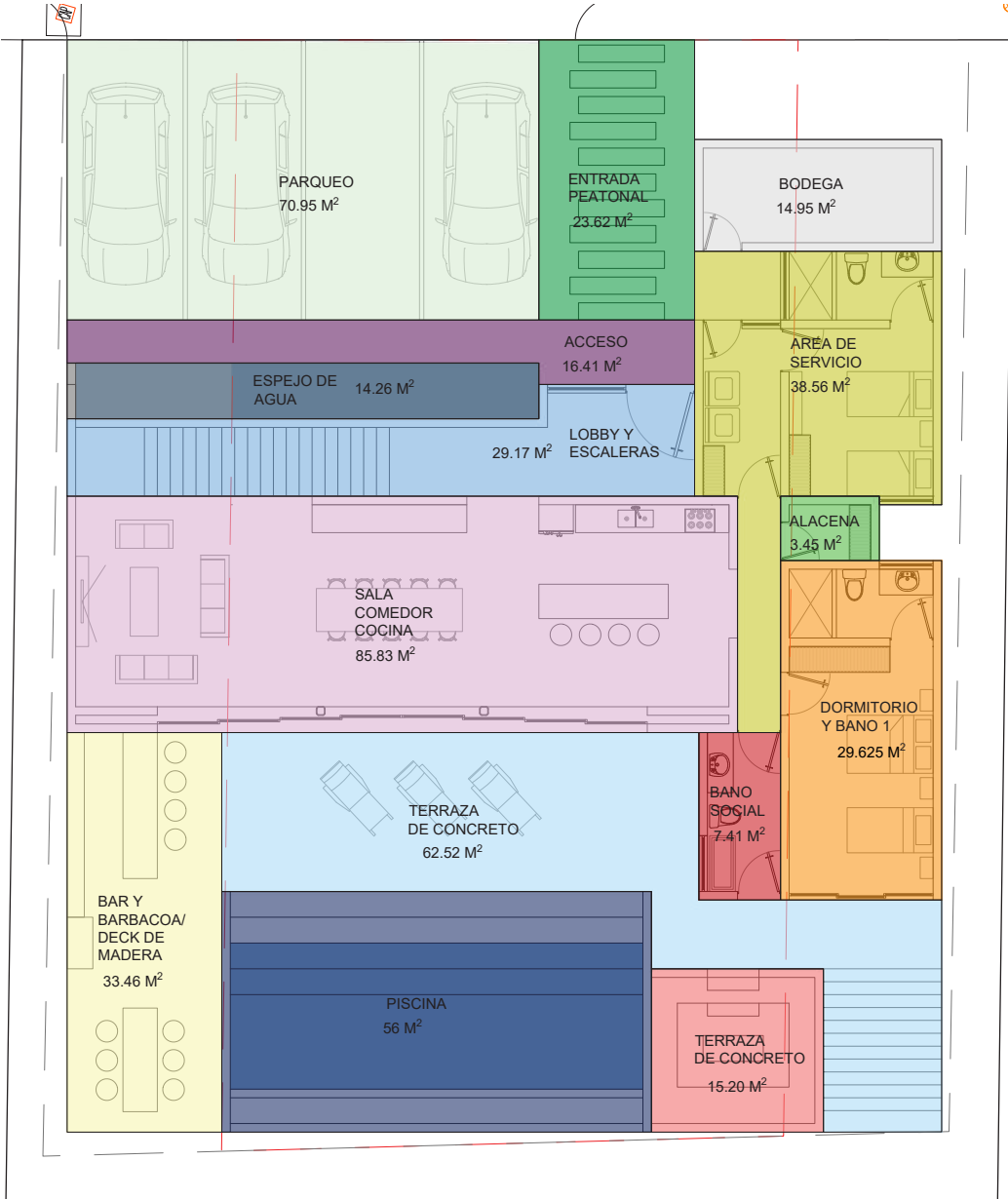
# MODERN HOME

Cerromar





This residence provides a comfortable space where you can relax and enjoy the tropical magic with modern facilities perfect for you and your needs.



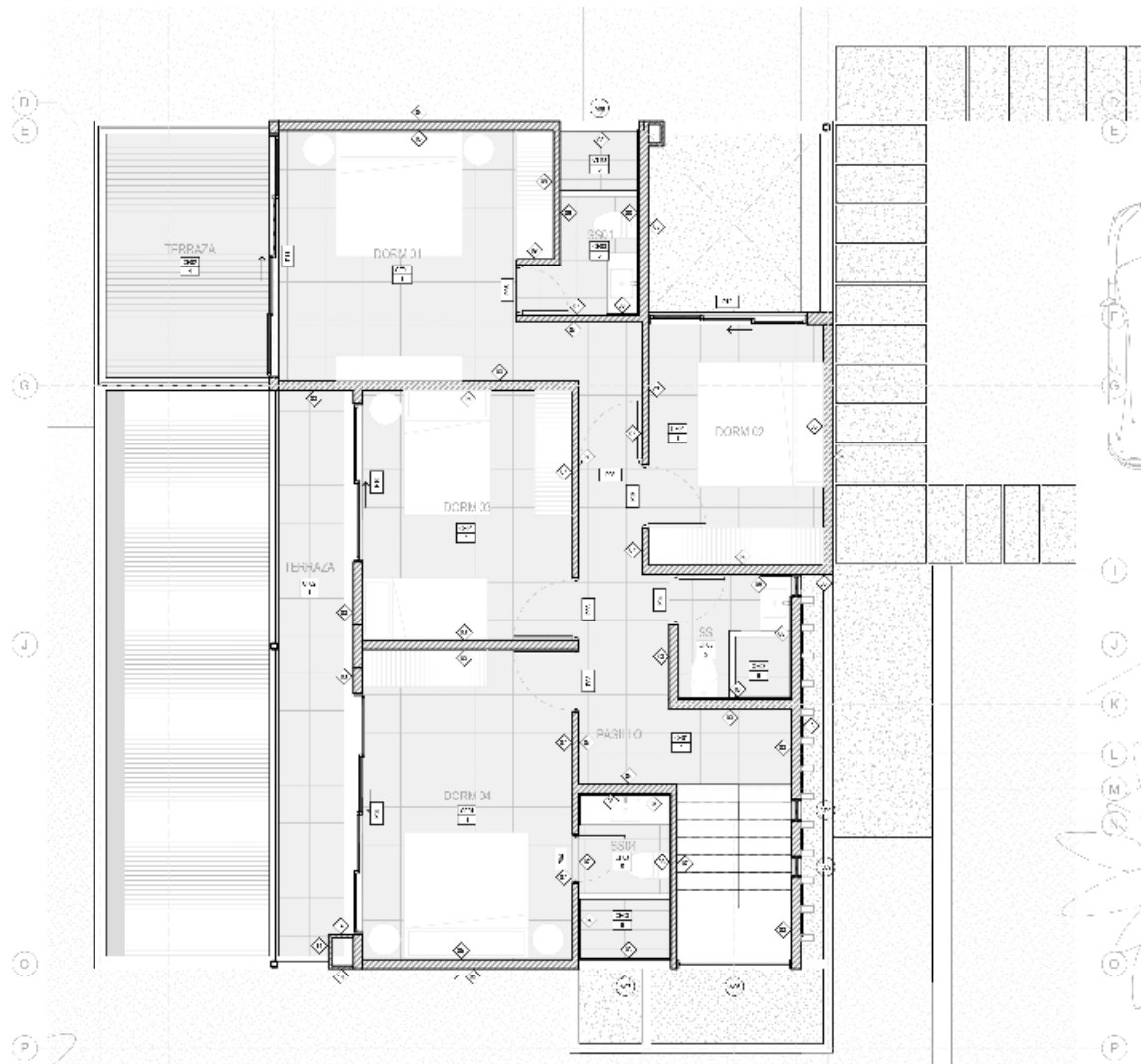


# BAYIT HOUSE

Cangrejera







The first beach and mountain development in Surf City 2 within an exclusive complex with 24/7 security, with its proven beach of more than 1,000 meters long to enjoy all year round.

The development of new infrastructure in the area, including an accessible highway and the future International Airport, will facilitate access to the most beautiful beaches in the country such as Playa La Ventana.





# MM HOME





This unique two-story first floor home combines boldness and functionality in an exclusive setting in Residencial Lomas de Altamira. With elegant finishes and a careful distribution, this property is a statement of style and comfort.





# SC HOUSE

Xánadu





Establishing a minimalist style, where white tones and different materials predominate in a natural presentation.

This residence is designed to create an atmosphere of comfort and spaciousness through the use of glass, visual axes, ventilation and lighting.



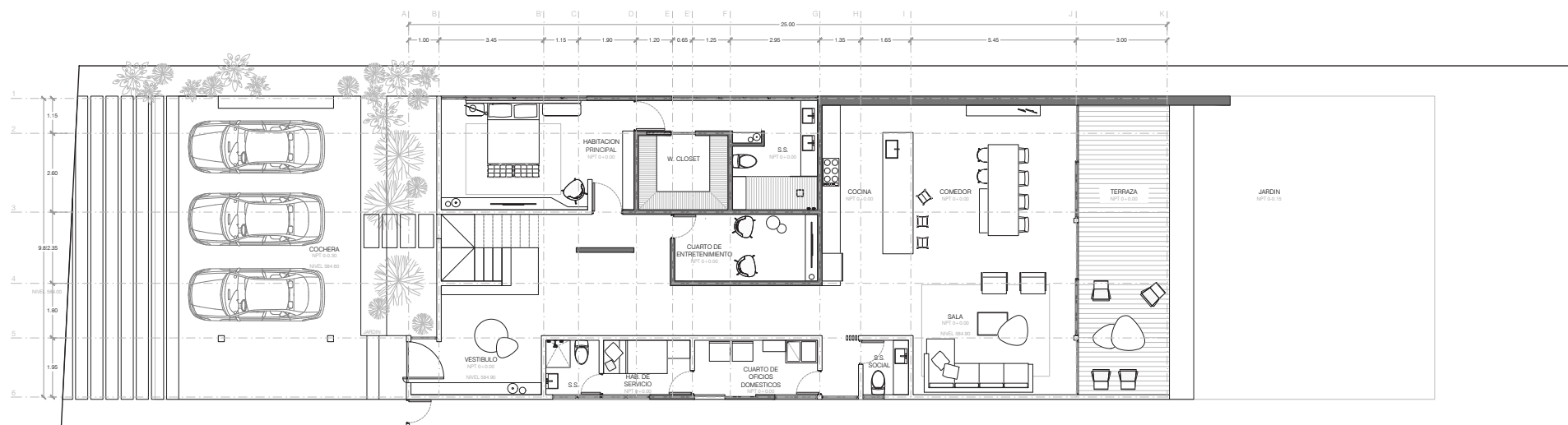


GD HOME

Las Luces







# HC HOUSE

Costa del Sol

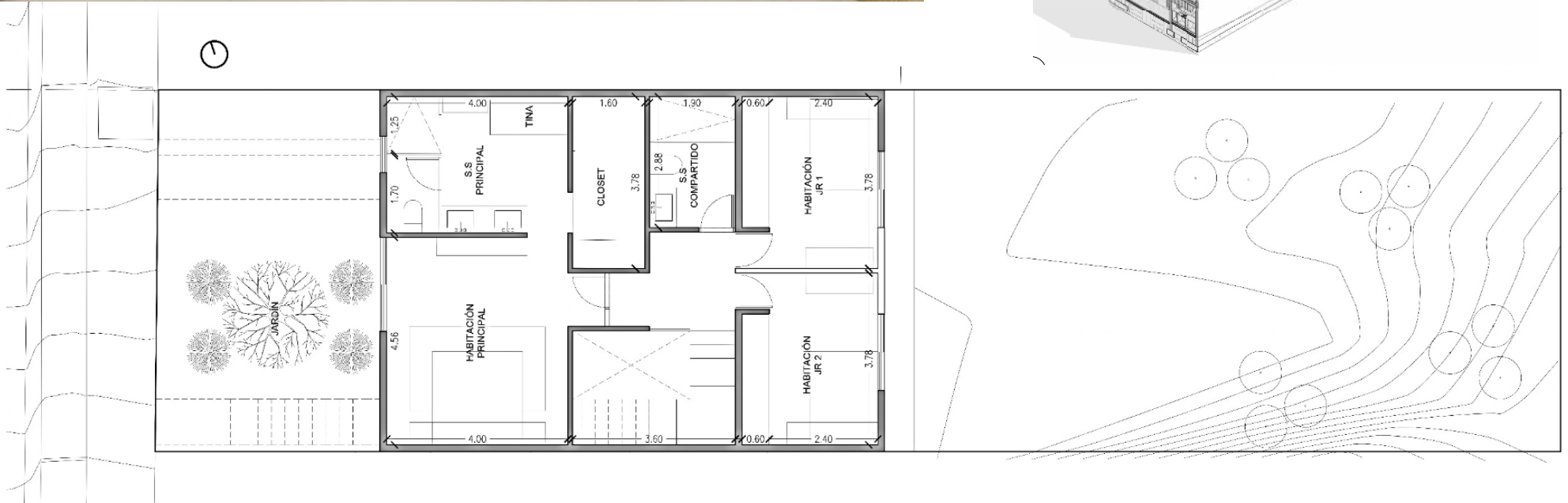
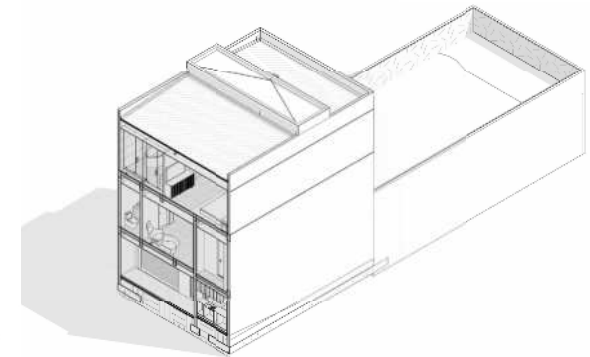






Inspired by the organic architecture movement, the house blends harmoniously into its surrounding landscape, with flowing forms and natural materials that merge with the environment.

The interior layout has been carefully designed to maximize functionality and comfort, with bright, open spaces that invite interaction with the surrounding landscape. acción y la contemplación.

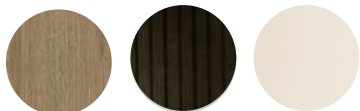
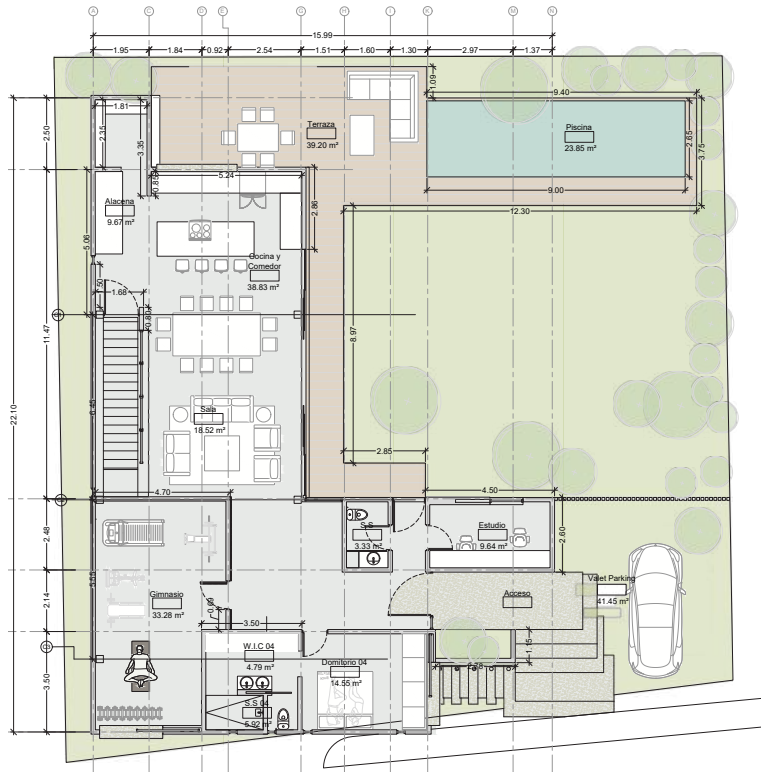




# EM HOME



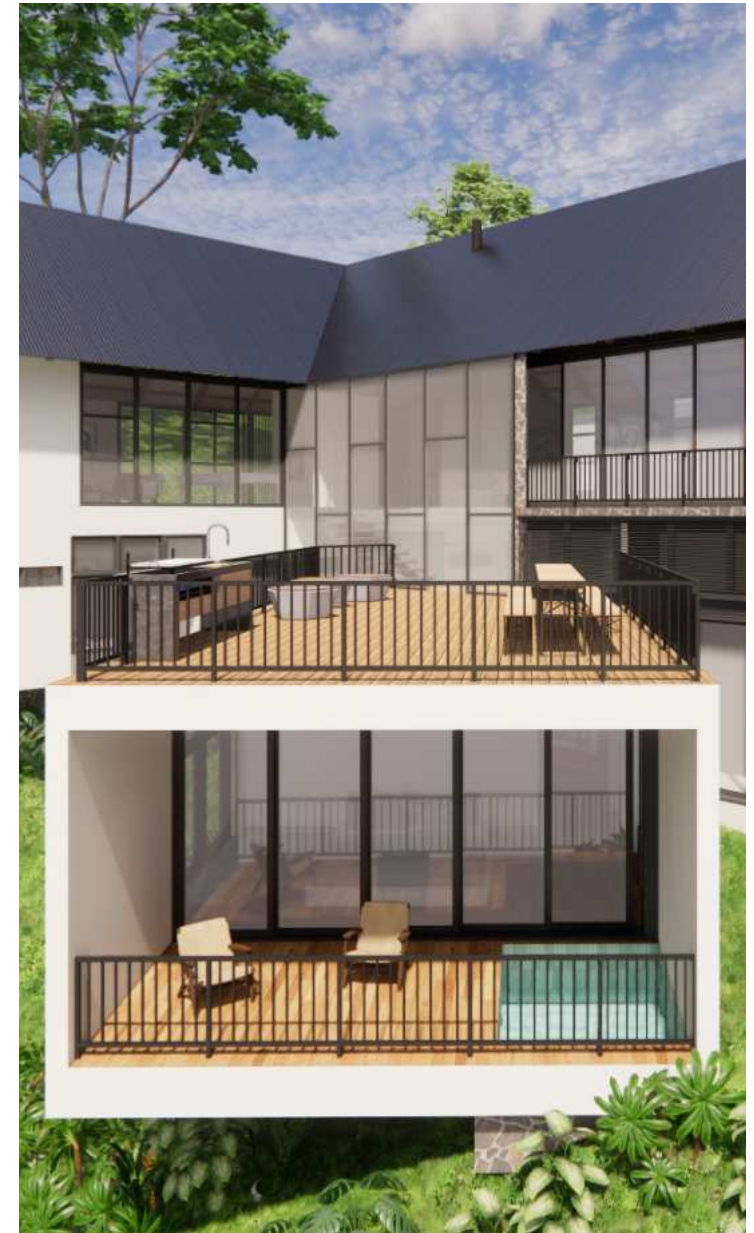




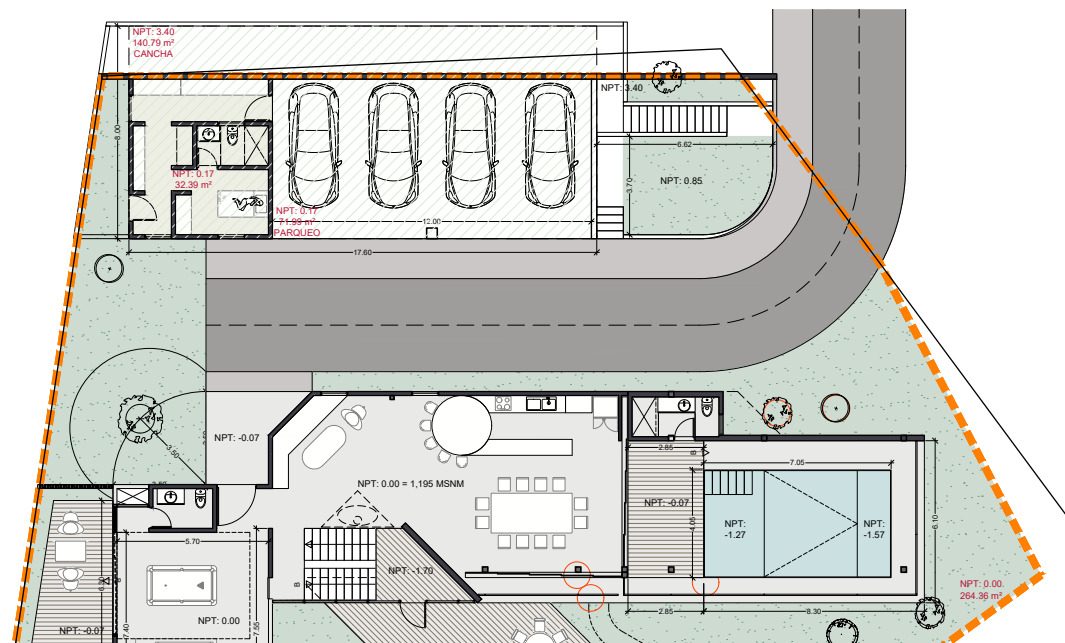
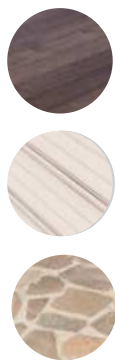
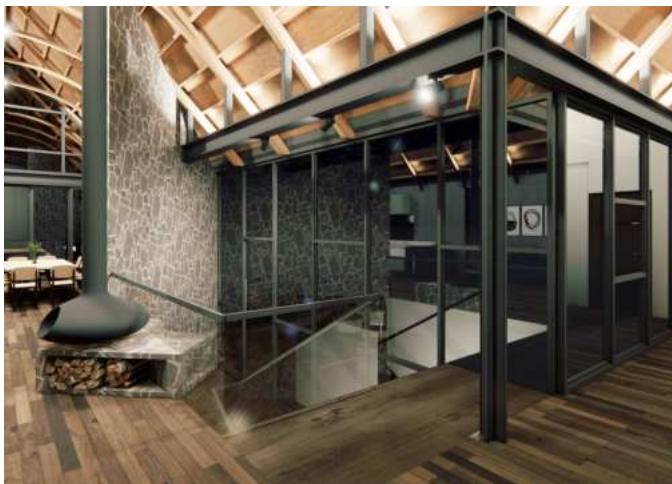


# EM HOUSE

---









# AS HOME









# GM HOME





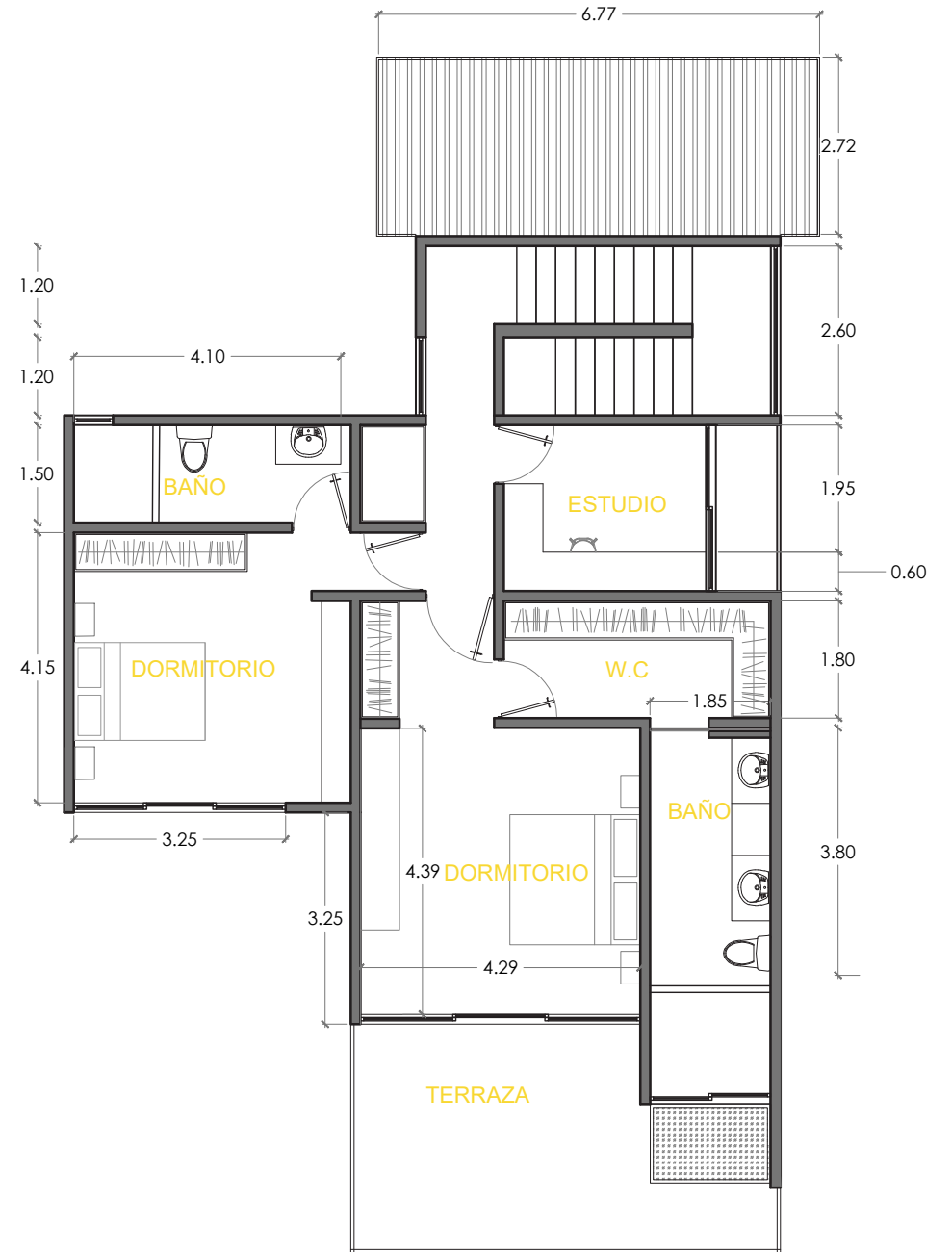




AS HOME









# GT HOUSE









# JS HOME

## El Sunzal

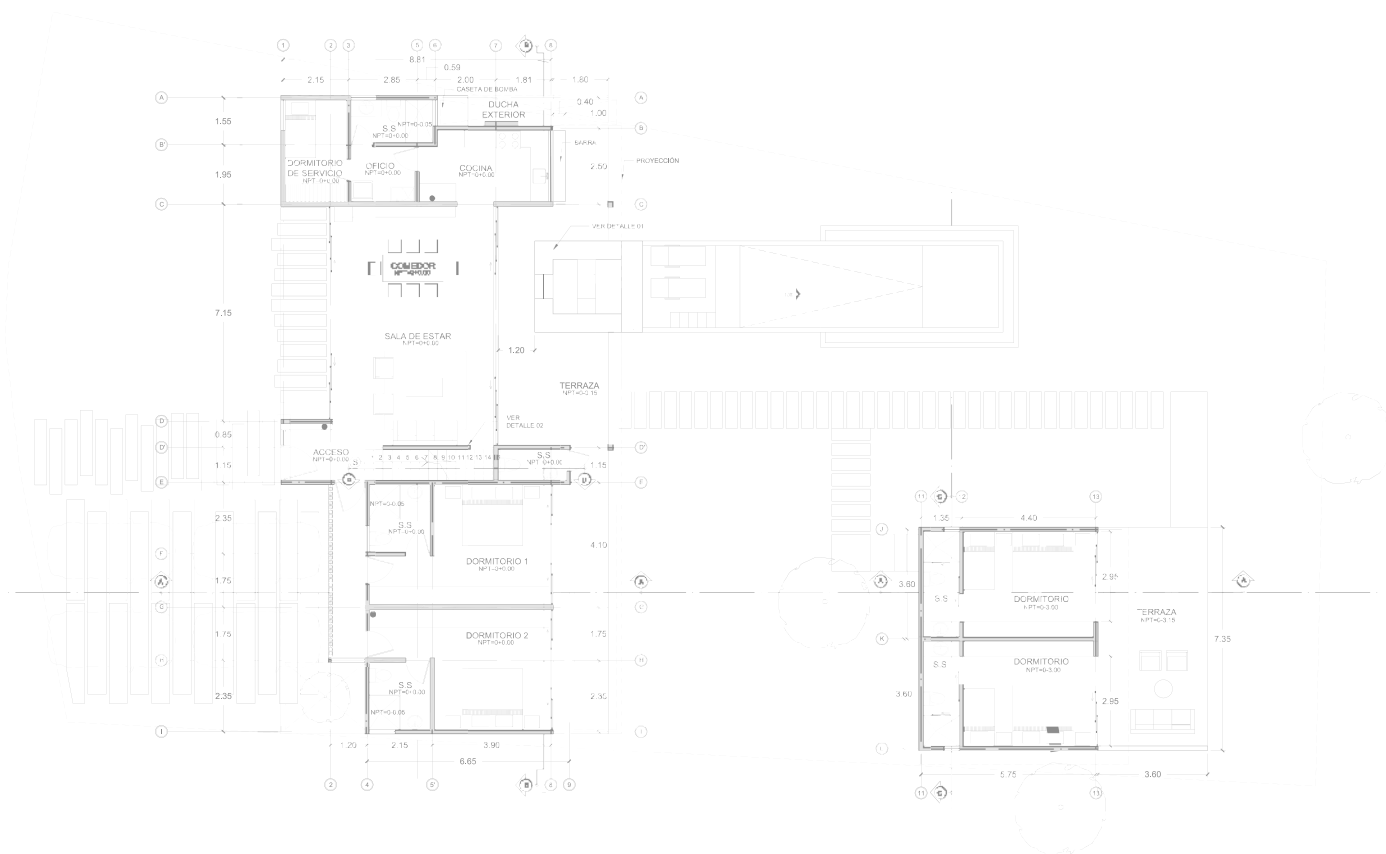
---



Located in the mountains of La Libertad. This house uses clear geometric figures, a diaphanous facade and vernacular architecture to create the house on a single level, creating a play of roofs and terraces throughout the project.







# — 24 HOME

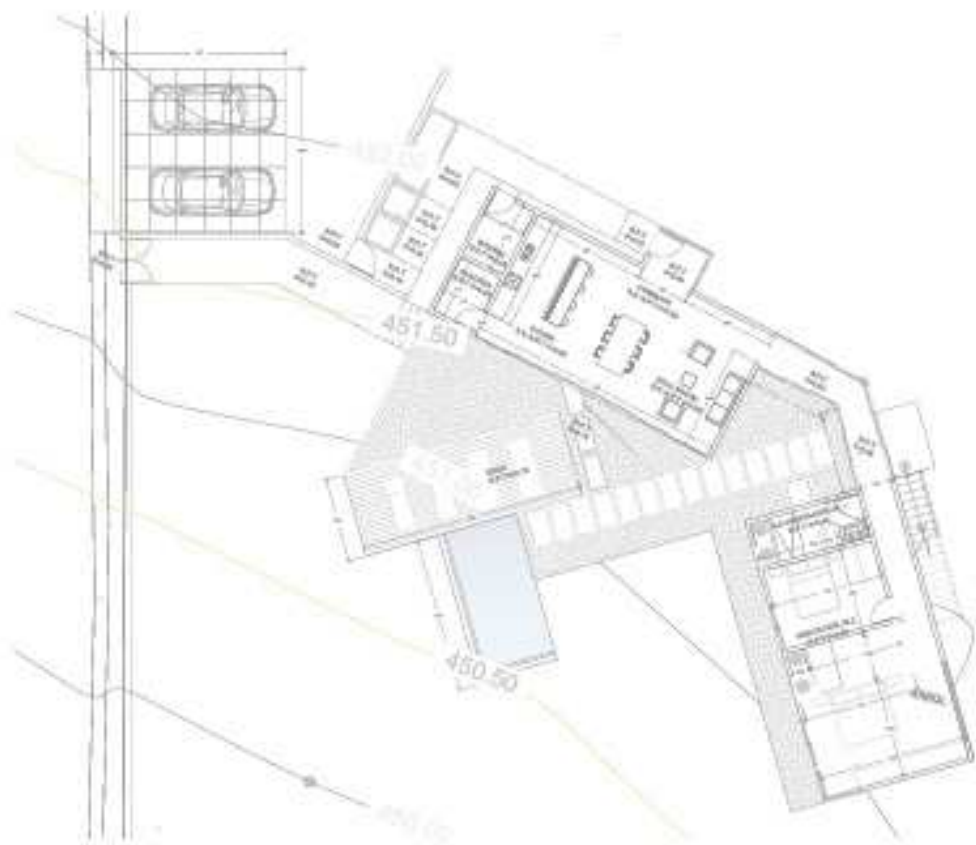


Making use of the unique view offered by the space, Casa 24 prioritizes the space offers, Casa 24 prioritizes the physical interaction between the user and the coastal zone through terraces, translucent panels and serial planes.

The project eliminates as many physical divisions as possible and unifies the social areas under one roof, extending the natural articulations of the design and eliminating conventional boundaries.







# D HOUSE

Cerromar





Establishing a linear play between concrete and wood, Casa D creates an atmosphere of symmetry where visual axes, recreational space and connectivity between the different areas predominate.



# TS HOUSE

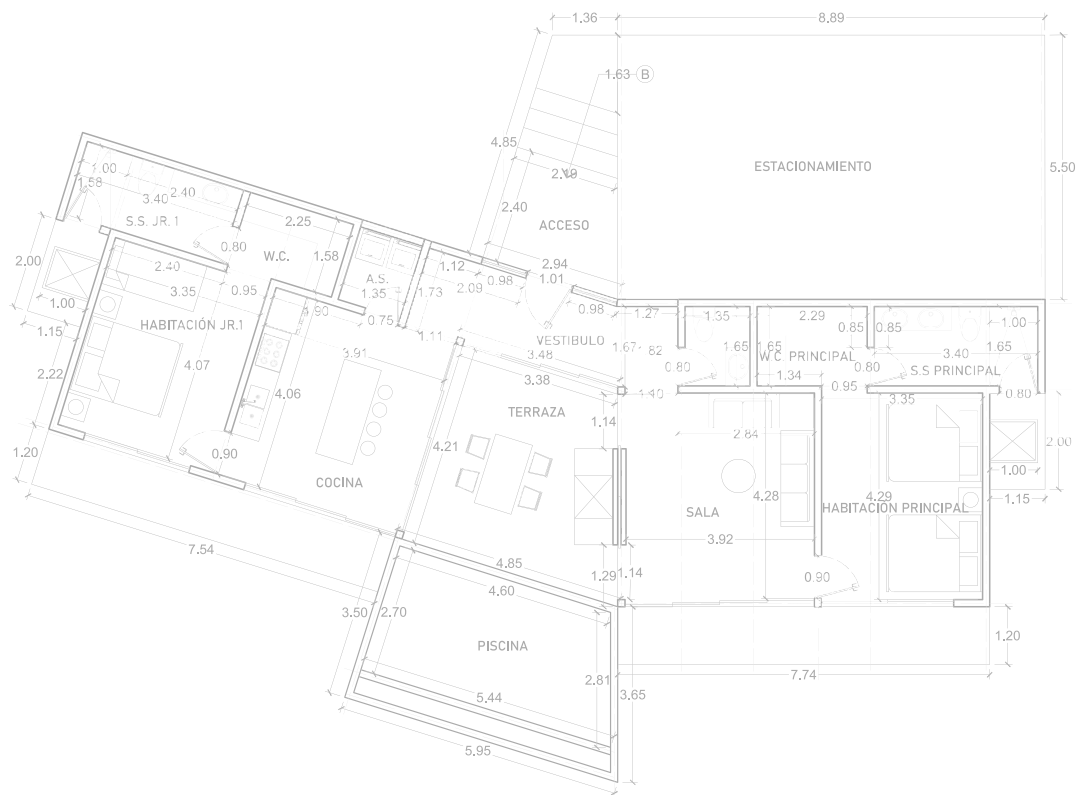
## Cerromar



Making use of symmetry and horizontal axes, CASA TS frames the access and social interaction spaces by opening the project in two different bodies where glass enclosures and lateral circulations predominate.







# S HOUSE

Canarias

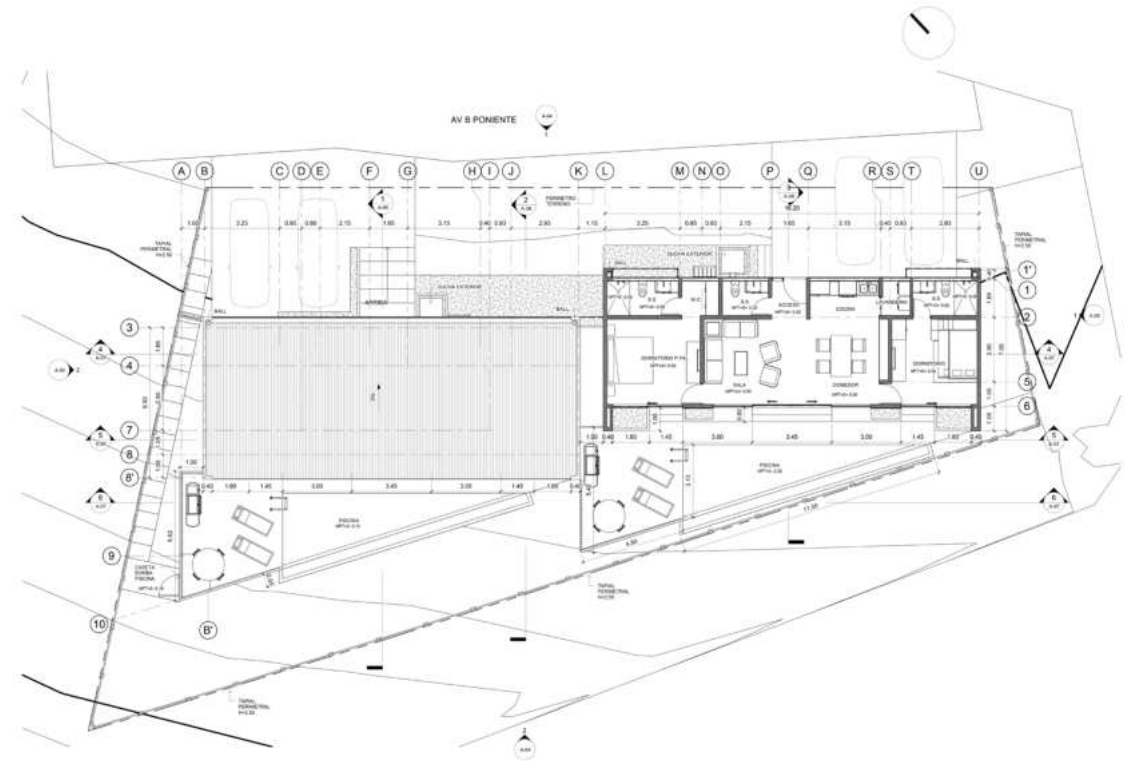






Located on the top of a summit in front of the beaches of La Libertad, Casa S has an unparalleled view of the coastal area.

Designed with modern concept, this project applauds symmetry by creating multiple vertical axes which are governed by a single horizontal axis. a single horizontal axis.



# LINEHOUSE

## Bahia Dorada

---

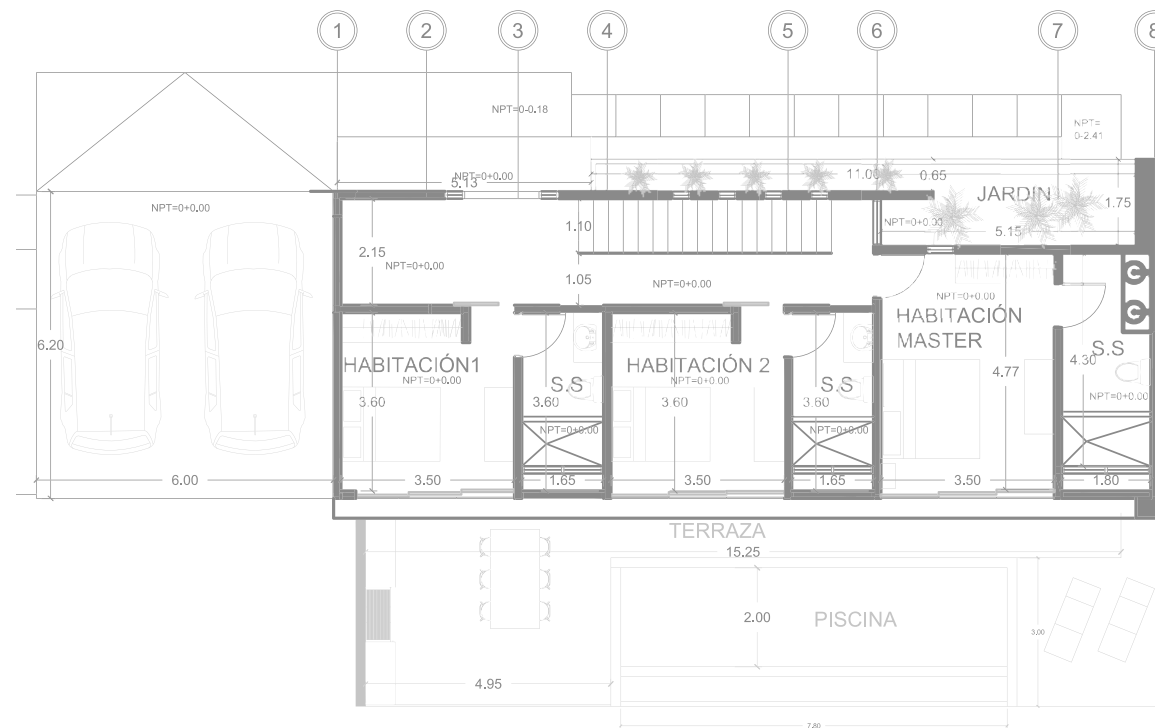






This house offers a combination of voids and solids, Linehouse embraces the outdoor space by creating multiple accesses and a translucent façade, which allows the coastal atmosphere to enter every area of the house.

Maximizing the concept of open spaces with simple distributions, Linehouse presents the social area on the first floor, which can be fully connected to the wooden deck that surrounds the infinity pool; and a private area, where the bedrooms are located, located on the second level.

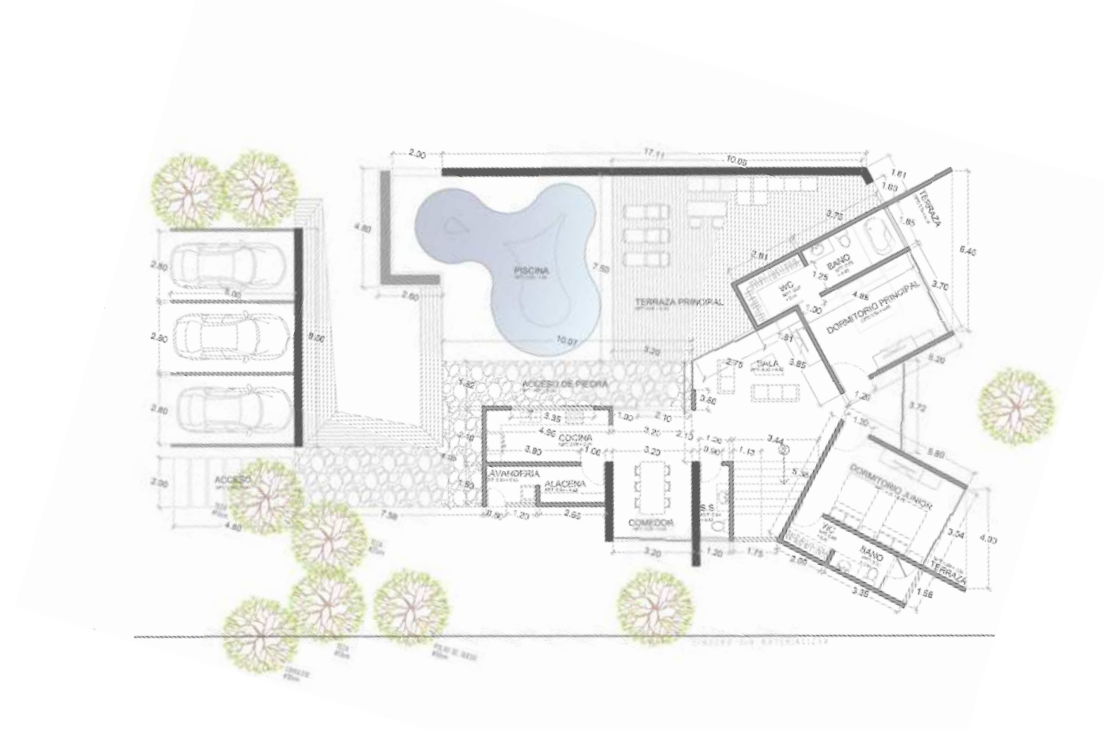


# EC HOME

Developed as a project for surfers and skateboarders, Casa EC is unique in its style and design. The project welcomes the user with a skating rink created for surfskate lovers, which blends with the pool and terrace, creating a single recreational space.







# ZN HOUSE

---

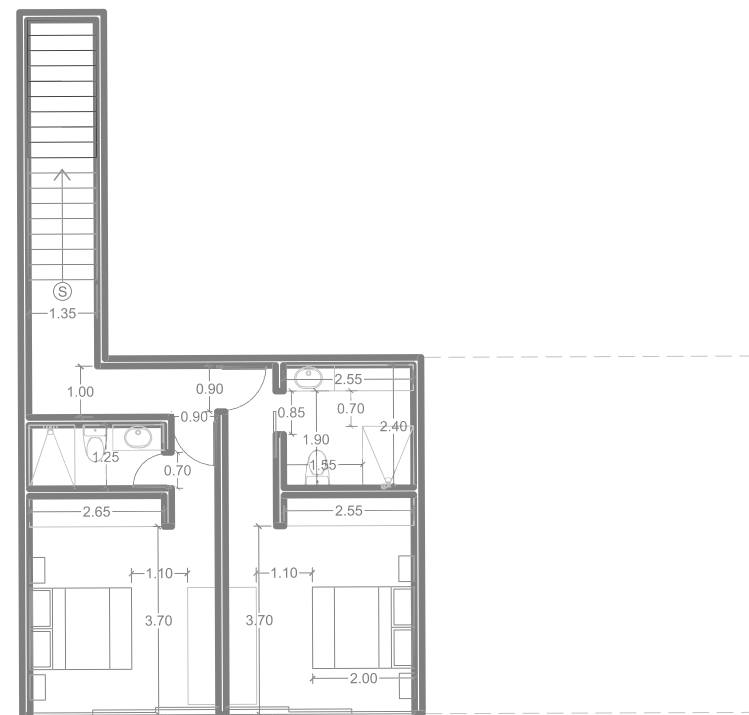
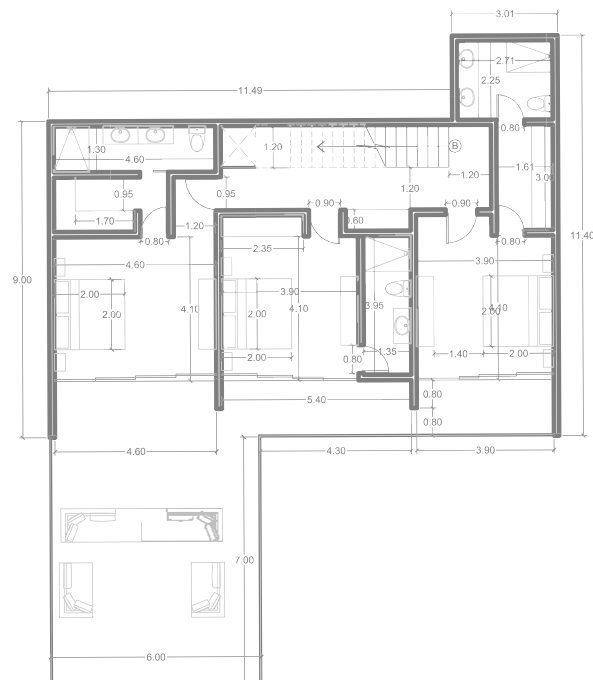
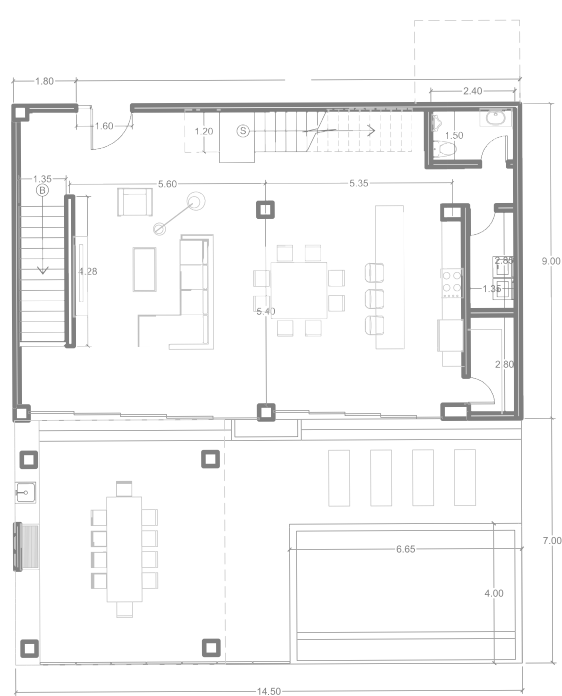


A project located within a very rugged topography, Casa ZN has a design that is unique to its complicated surroundings and beach atmosphere.

By locating the main access on the central level, all secondary spaces are pushed to the side and allow the rooms, as well as the social areas, to have the best view and ventilation in the distribution of the house.





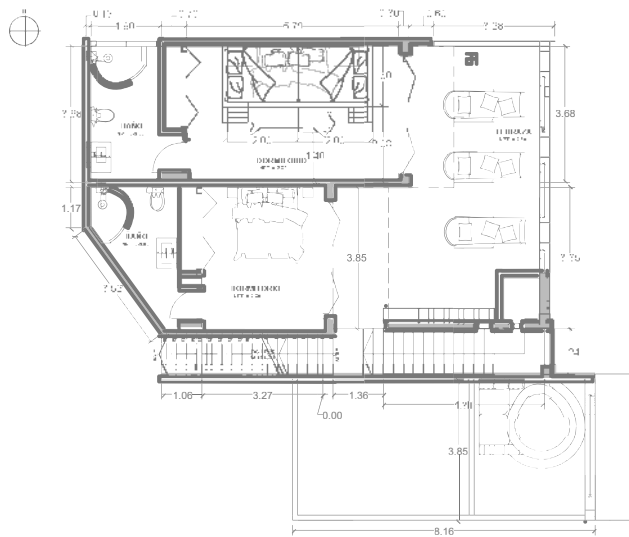
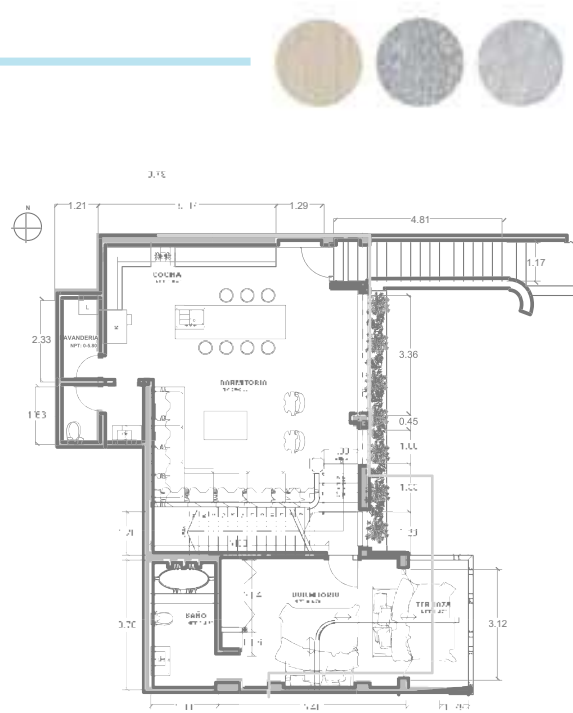


# RG HOUSE

Cerromar







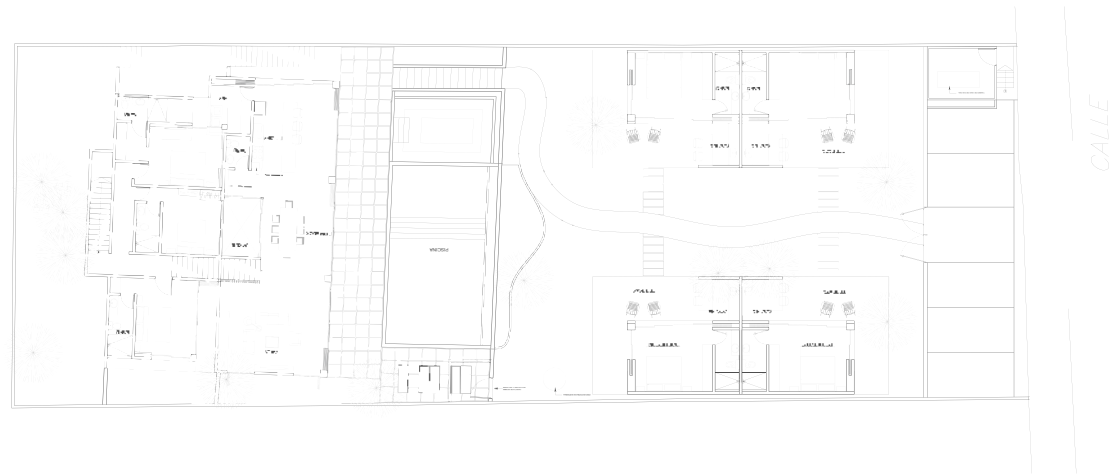
# DR HOME

## Tamanique

---







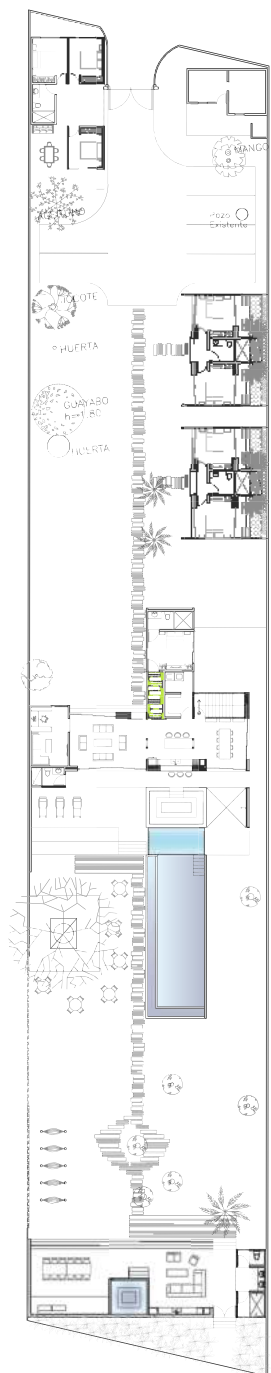


# SO HOUSE

Conchalío



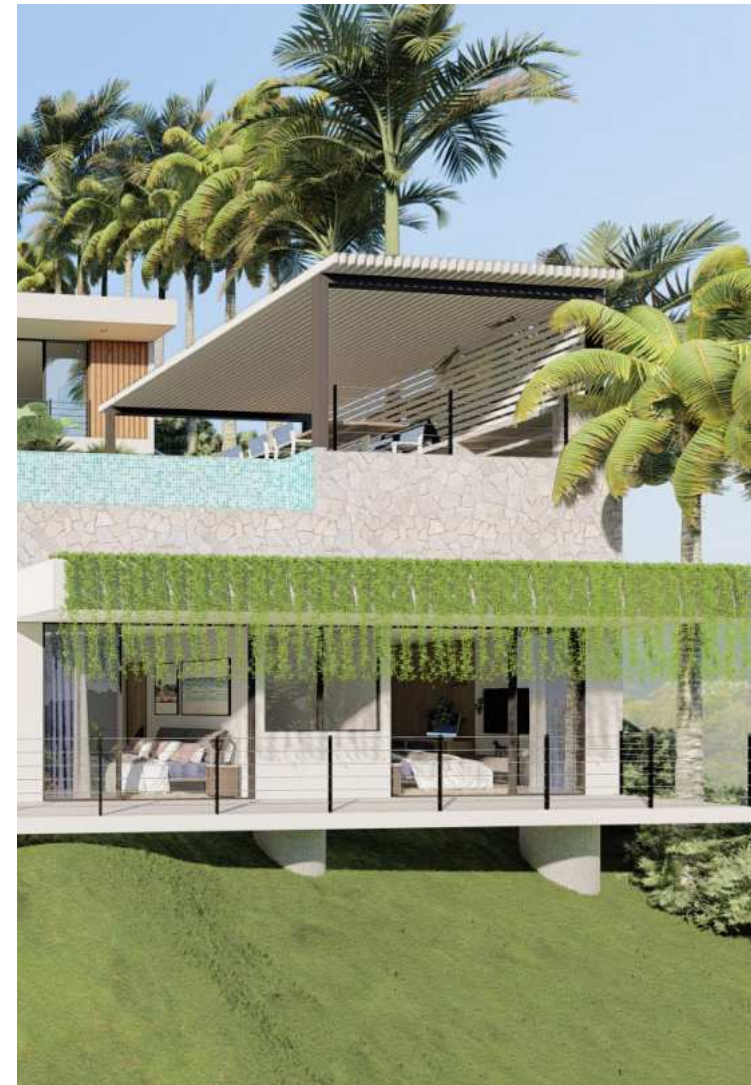




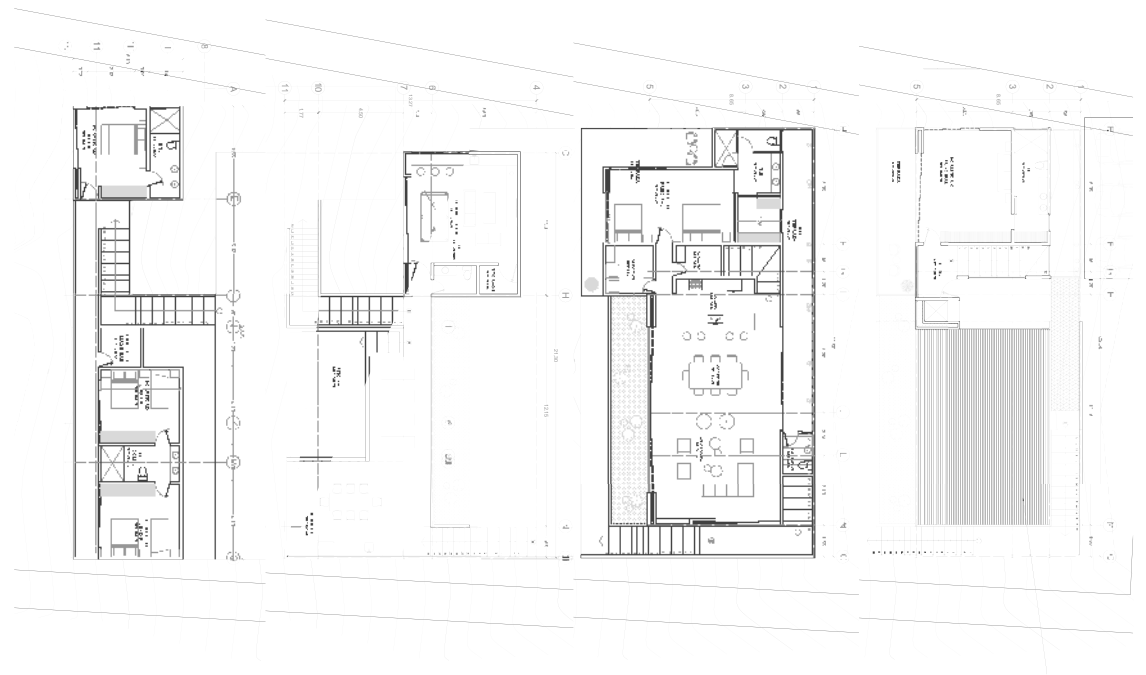


# L17 HOUSE

---









# BACKHILL HOME

For the design of the Backhill House located in the Bahia Dorada Residential, we took into account the slope of the land and the existing trees in the area, with the idea of opening the house towards the sea.

The house takes a concept that opens the spaces towards a Conacaste tree located in the center of the lot, which is reflected in the infinity pool that blends in with the horizon of the sea.



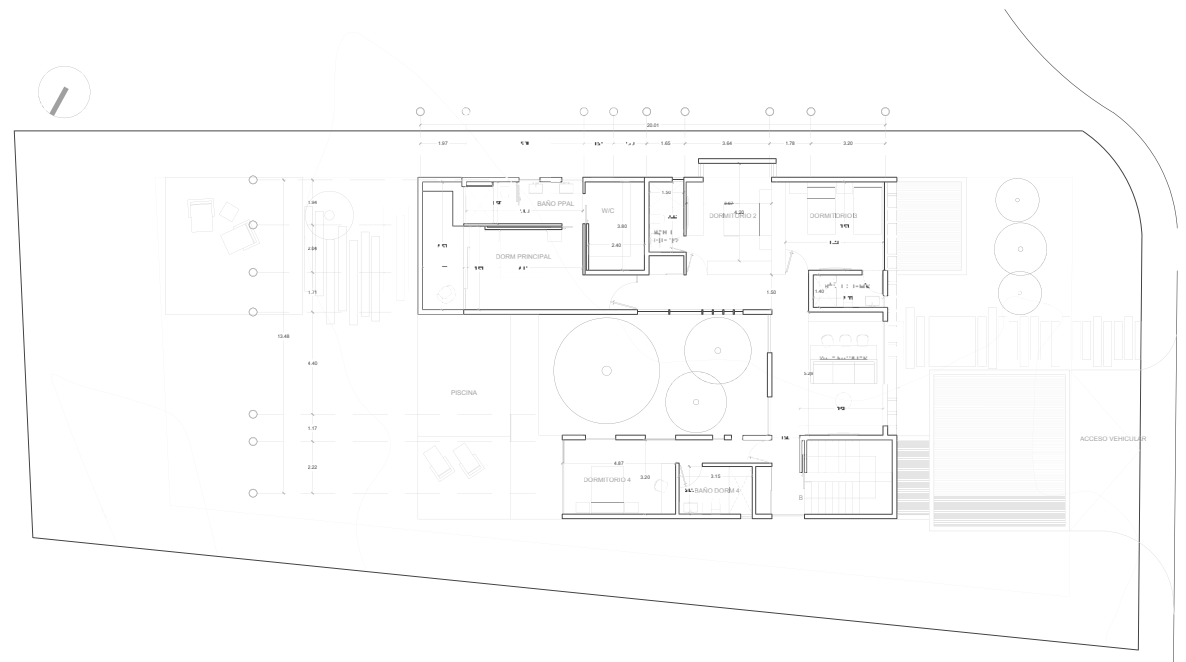




# DE HOME



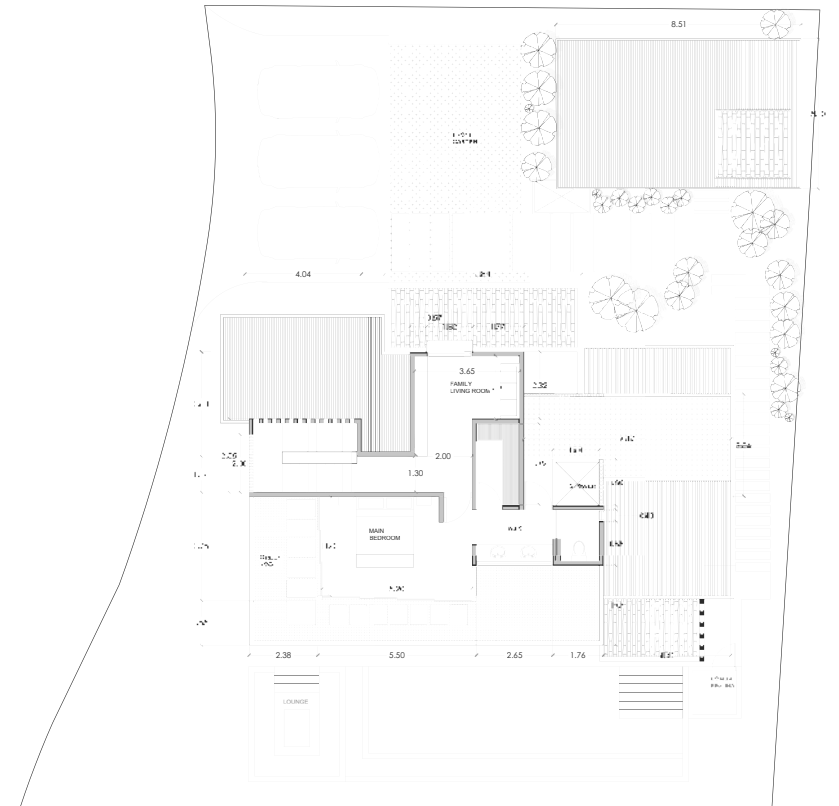




# LB HOUSE







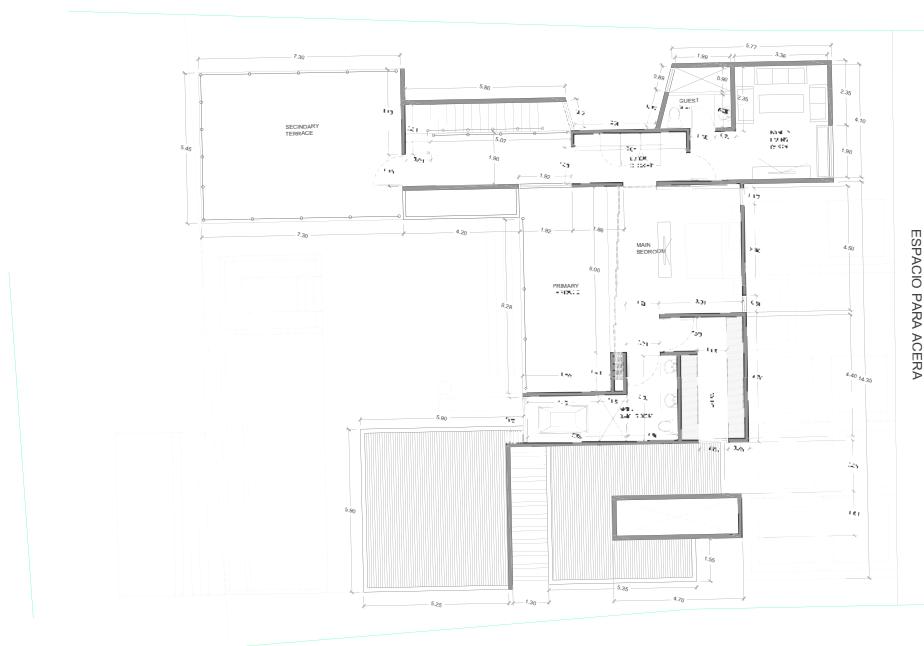
# 170 HOUSE

Distributed in a U-figure, Casa 170 centralizes the social space with a 170-degree view, thus generating different atmospheres in each of the rooms and providing a degree of privacy to all users of the house.

However, all circulation is defined through a central component that governs the visual axes: the swimming pool and the wooden deck.



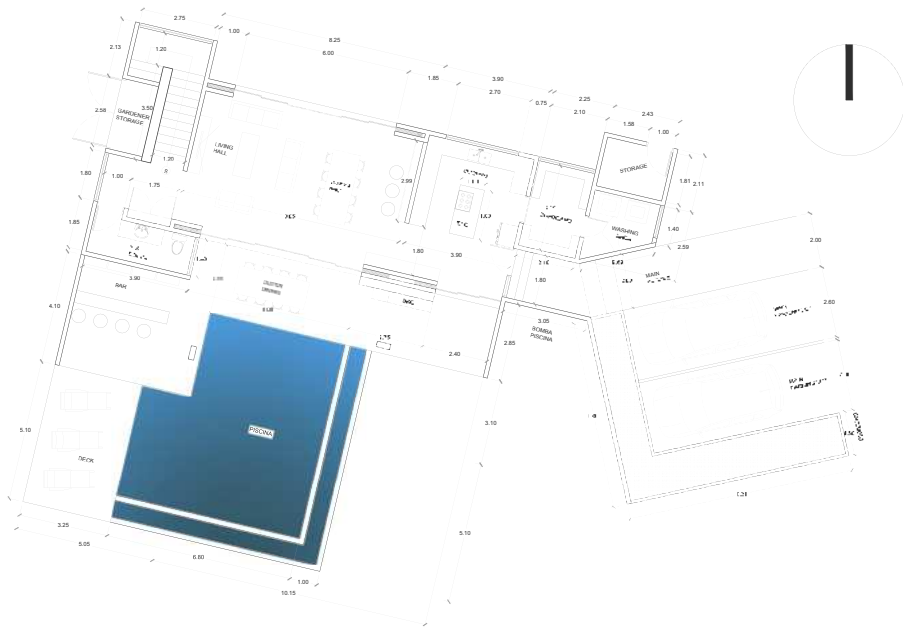




# GR HOME







# EM HOUSE

---





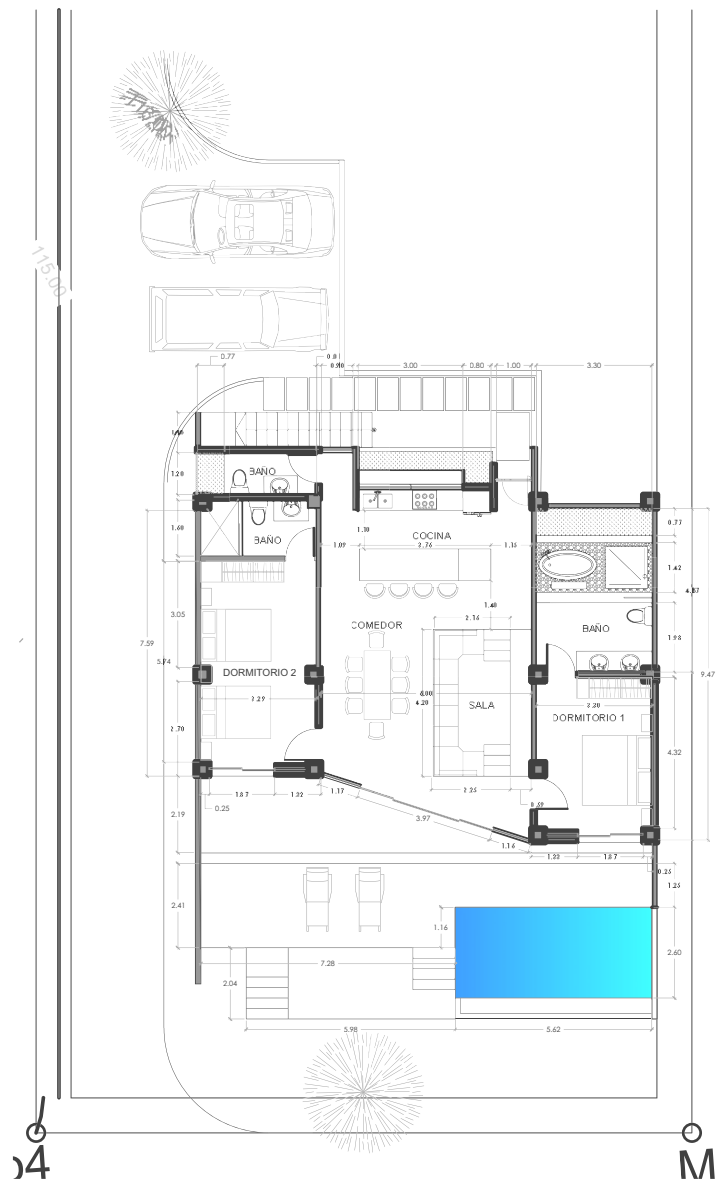




# MW HOME

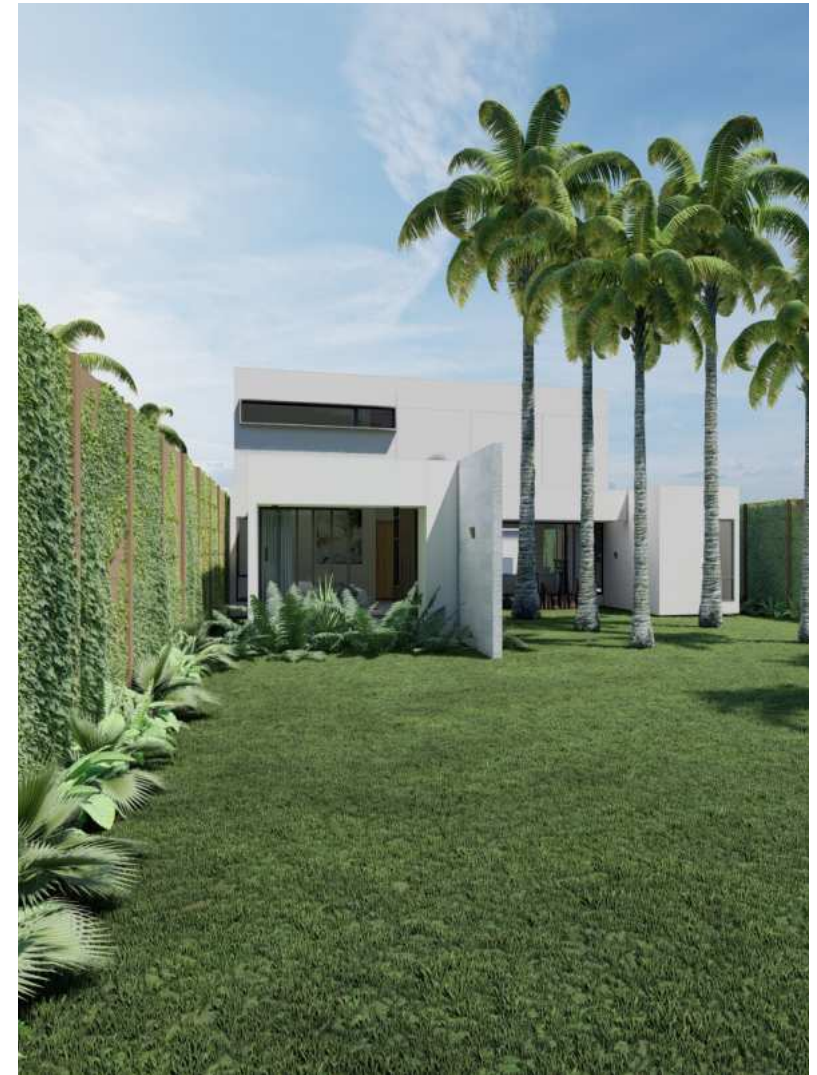




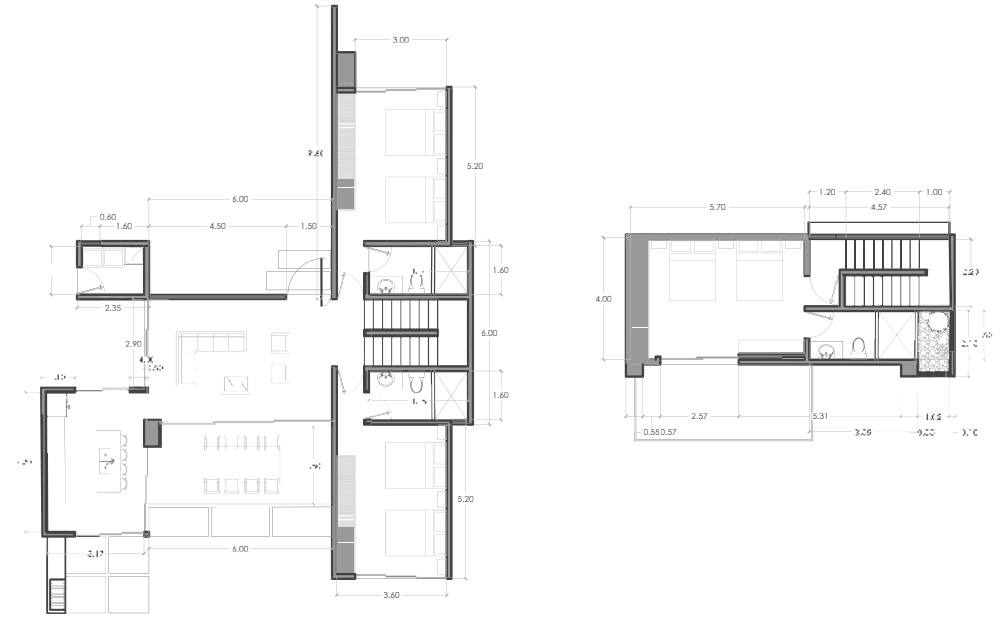


# LG HOUSE

---



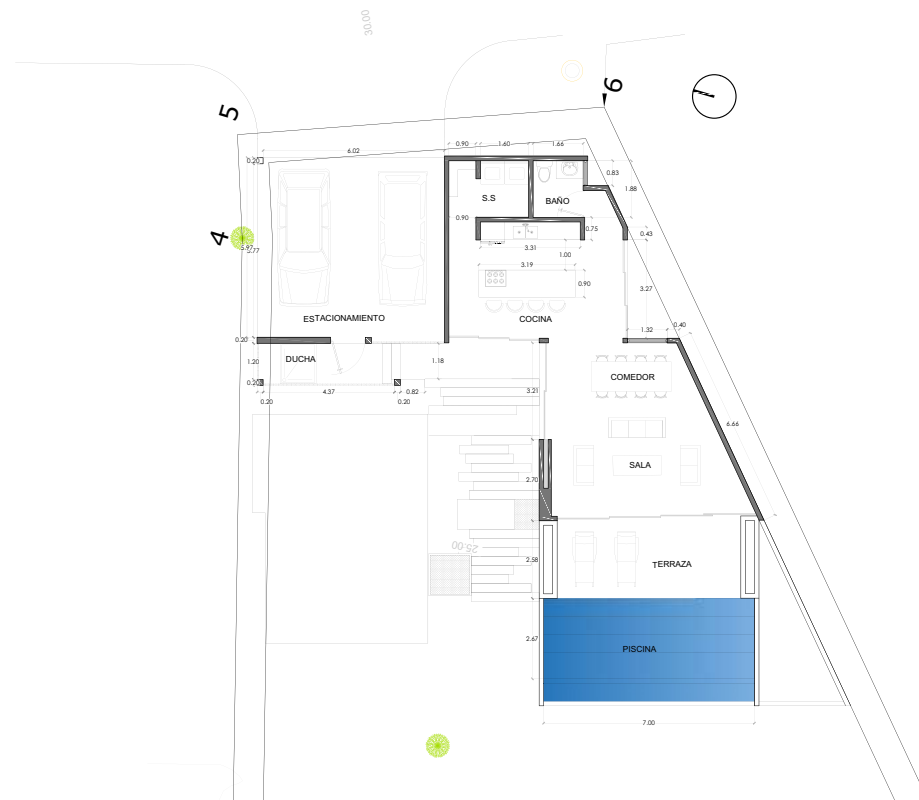




# EB HOUSE



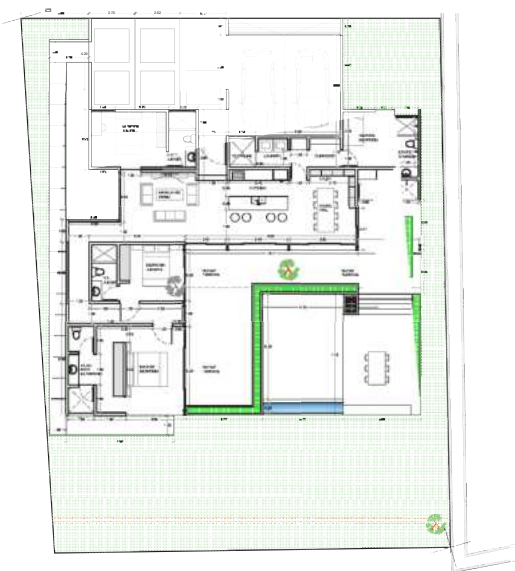




# BP HOME







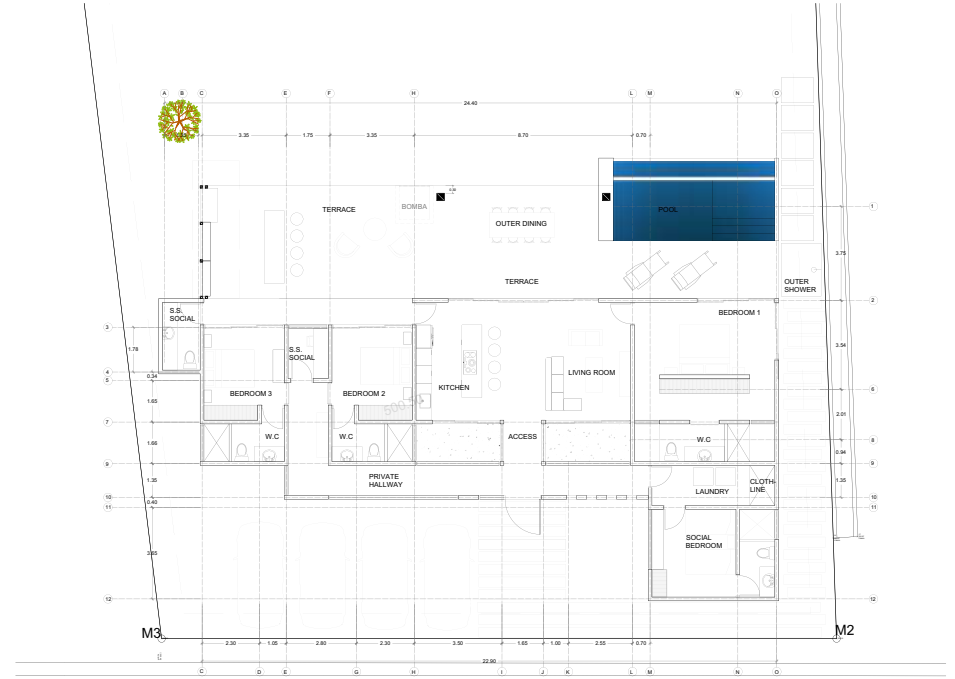


# AC HOUSE

---







## CONTACT US



+503 7056 – 3113



@doma\_arquitectos



info@domaarquitectos.com



www.domaarquitectos.com



**DOMA**  
Arquitectos

## VISIT US



Edificio Insigne, nivel 10, oficina  
1001, Col. San Benito, San Salvador





